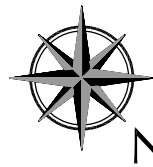
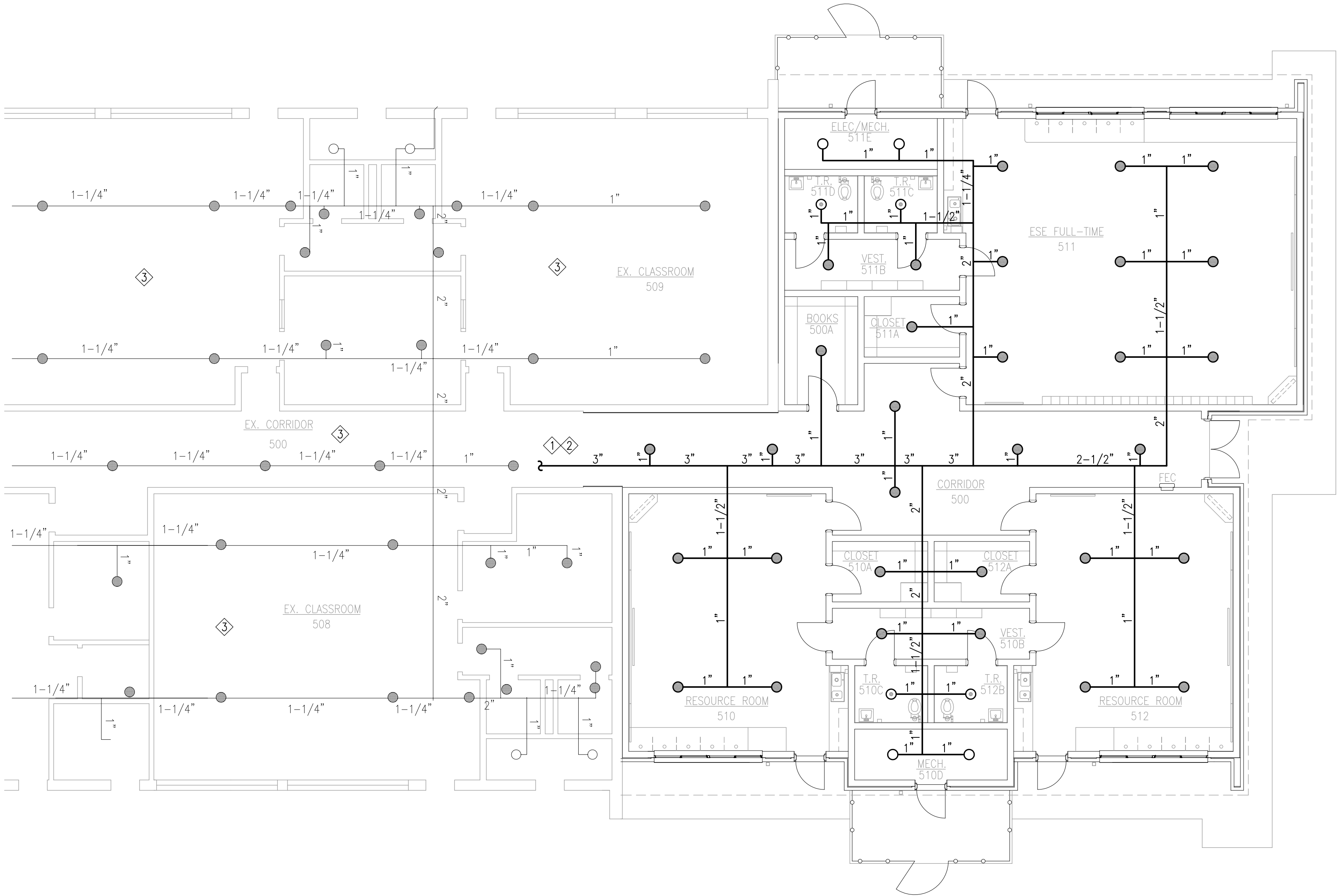


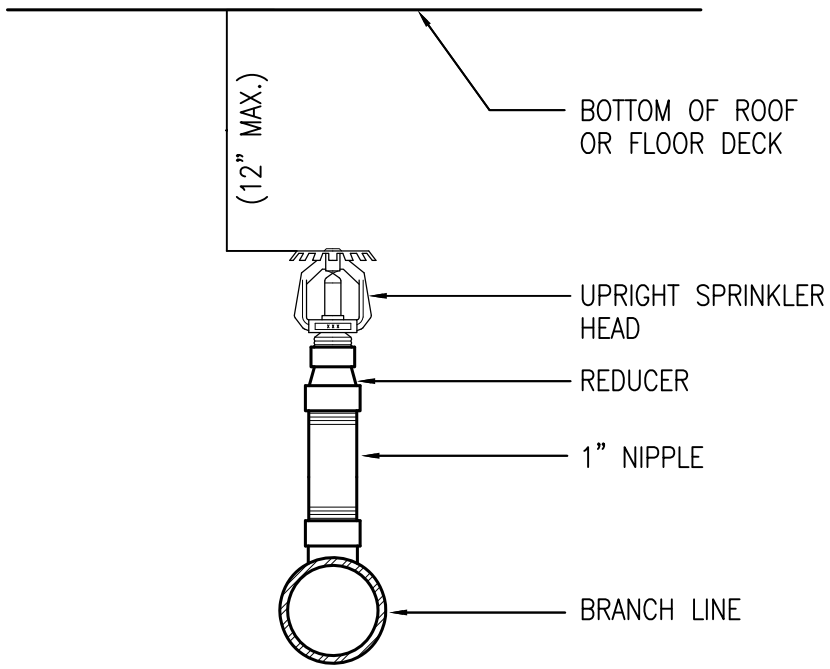
KEY NOTES

- 1 EXTEND EXISTING FIRE SPRINKLER SYSTEM FROM EXISTING BUILDING TO COVER BUILDING ADDITION. HAZARD CLASSIFICATIONS TO BE AS SHOWN.
- 2 THE CONTRACTOR SHALL FIELD VERIFY THE EXACT POINT OF CONNECTION TO THE EXISTING WET PIPE SPRINKLER SYSTEM. THE CONNECTION POINT SHALL CONSIDER THE SIZE OF EXISTING PIPE, NUMBER OF SPRINKLER HEADS SERVED AND THE TOTAL AREA SERVED BY THE ZONE BEING ADDED ONTO.
- 3 EXISTING SYSTEM (SHOWN LIGHT) REPRESENTS THE SYSTEM AS SHOWN ON PREVIOUS CONSTRUCTION DOCUMENTS AND MAY NOT FULLY REPRESENT ACTUAL FIELD CONDITIONS. FIELD VERIFY ACTUAL EXISTING CONDITIONS PRIOR TO BID.



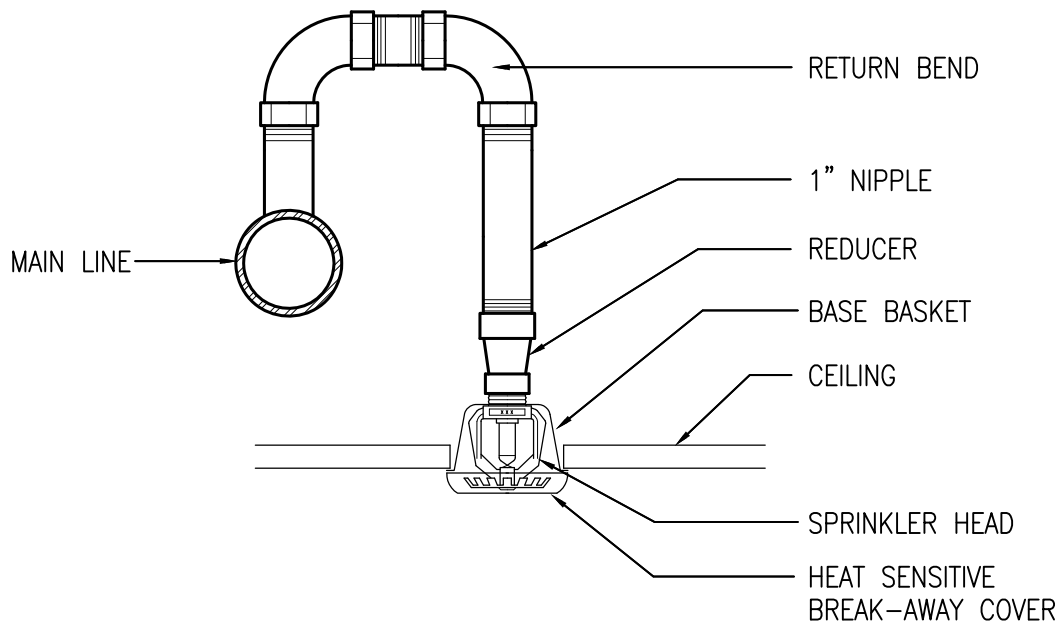
NEW WORK FIRE SPRINKLER PLAN – WING 5

SCALE: 1/8"=1'-0"



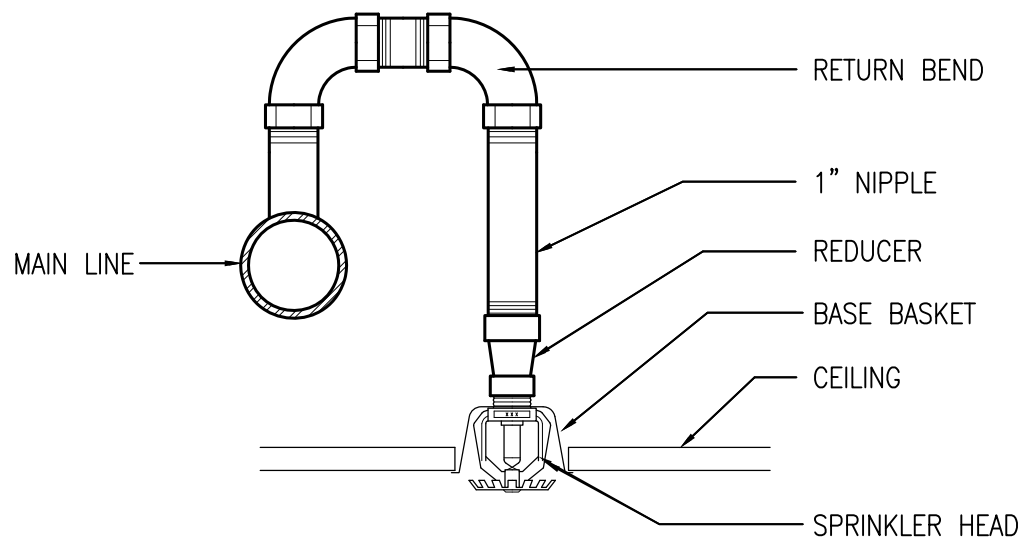
UPRIGHT SPRINKLER HEAD DETAIL

NOT TO SCALE



CONCEALED SPRINKLER HEAD DETAIL

NOT TO SCALE



RECESSED SPRINKLER HEAD DETAIL

NOT TO SCALE



PINDER-MARTIN ASSOCIATES, INC.
1001 N. 12th AVENUE
PENSACOLA, FL 32501
850-439-9110

AA26000896

PROJECT:
5 CLASSROOM ADDITION

LOCATION:
WEST NAVARRE INTERMEDIATE SCHOOL
1970 COTTON BAY LANE
NAVARRE, FL 32566

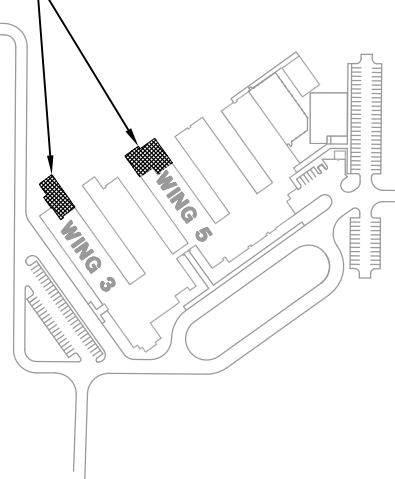
CONSULTANTS:
JEHLE-HALSTEAD, INC.
49 EAST CHASE STREET
PENSACOLA, FL 32502

CRAFT & WEBSTER
STRUCTURAL ENGINEERING, INC.
129 HIGHPOINT DRIVE
GULF BREEZE, FL 32561

GULF BREEZE CONSULTING, INC.
139 EAST GOVERNMENT STREET
PENSACOLA, FL 32502

ADAMS CONSULTING
ENGINEERING, INC.
3 WEST GARDEN STREET – SUITE 382
PENSACOLA, FL 32502

NEW CLASSROOM ADDITIONS



WEST NAVARRE INTERMEDIATE

No.	Revision/Issue	Date

KENNETH L. GONZALEZ
ENGINEER OF RECORD
PE 61015

DRAWN BY: KMJS
CHECKED BY: KLG
PINDER-MARTIN ASSOCIATES, INC.
PROJECT #: 21118.03
REVIEW: 09-06-11
PERMITTING: 09-09-11
RELEASE FOR BIDDING: 09-19-11

NEW WORK
FIRE SPRINKLER
PLAN WING 5

FP1.2